

right part. right place. right time.

network global logistics

columbus (lockbourne), OH



NGL Logistics and Supply Chain Services:

- Contract Logistics
- Multi-Tenant Warehousing
- Service Parts Logistics
- E-Commerce Fulfillment
- Distribution
- Manufacturing Support Services

NGL Transportation Services:

- Sameday Air
- Sameday Ground
- International NFO
- Priority Airfreight
- International Airfreight
- Trade Compliance and Customs
- Ocean Shipping
- Freight Brokerage
- Parts Swap Out
- AOG
- Charter
- Reverse Logistics
- Time Critical Transportation

Columbus (Lockbourne), OH • Foreign Trade Zone #138

1500 Commodity Blvd
Lockbourne, OH 43137

- 500,000 Square Feet
- Building Dimensions: 400' x 12,500'
- Ceiling Height: 32' clear
- Bay Dimensions: 50' x 50'
- 60 Truck Dock Doors
- 19 Rail Doors

Corporate Headquarters
320 Interlocken Parkway, Suite 100
Broomfield, CO 80021
Phone: 800.938.1809
www.nglog.com



right part. right place. right time.

network global logistics

foreign trade zone

What is a Foreign-Trade Zone?

It is a program created by the Federal Government which has existed since the 1930's, and is thriving today. Its purpose is to facilitate trade and increase the global competitiveness of U.S. based companies.

Legally, a Foreign-Trade Zone (FTZ) is an area within the United States that the Government considers outside the country, or at least, outside the U.S. Customs territory. Certain types of merchandise can be imported into a Zone without going through formal Customs entry procedures or paying import duties.

Some of the benefits of operating within an FTZ are obvious. At the very least, an FTZ can help you defer paying duties. More often, the company pays lower costs, not only to U.S. Customs, but to its bank, insurance company, and other vendors

FTZ Advantages / Improving Cash Flow

- Elimination of Ohio Inventory Tax
- Defer, reduce, and/or eliminate U.S. Customs duties
- Distribution savings
- Elect preferential duty rates

Activities Permitted in a Foreign-Trade Zone*

Merchandise entering a zone may be:

Assembled	Repackaged	Cleaned
Tested	Destroyed	Stored
Sampled	Mixed	Salvaged
Relabeled	Processed	Manipulated
Manufactured		

**The user must receive special approval from the FTZ Board for manufacturing.*

10 Ways Your Company Can Benefit From Using A Foreign-Trade Zone:

- 1) Imports may be admitted and held in a foreign-trade zone without paying U.S. Customs duties.
- 2) FTZ users can pay the duty rate on component material or merchandise produced from component material – whichever is lower.
- 3) Customs duties are not paid on merchandise exported from a zone.
- 4) Duties are reduced or eliminated on materials subject to defect, damage, obsolescence, waste or scrap.
- 5) Merchandise may be re-exported and returned to an FTZ without duty payment.
- 6) Spare parts may be stored, returned or destroyed without duty payment.
- 7) Delays in Customs clearances and duty draw backs are reduced or eliminated.
- 8) Duties are not owed on labor, overhead or profit attributed to FTZ production operations.
- 9) Quality control inspections can identify sub-standard goods to be destroyed or returned without duty payment.
- 10) No duty is owed on in-bound, zone-to-zone transfer of FTZ merchandise.

NGL Logistics and Supply Chain Services:

- Contract Logistics
- Multi-Tenant Warehousing
- Service Parts Logistics
- E-Commerce Fulfillment
- Distribution
- Manufacturing Support Services

NGL Transportation Services:

- Sameday Air
- Sameday Ground
- International NFO
- Priority Airfreight
- International Airfreight
- Trade Compliance and Customs
- Ocean Shipping
- Freight Brokerage
- Parts Swap Out
- AOG
- Charter
- Reverse Logistics
- Time Critical Transportation

For additional information call 310-410-7777 or visit www.nglog.com

Corporate Headquarters
320 Interlocken Parkway, Suite 100
Broomfield, CO 80021
Phone: 800.938.1809
www.nglog.com

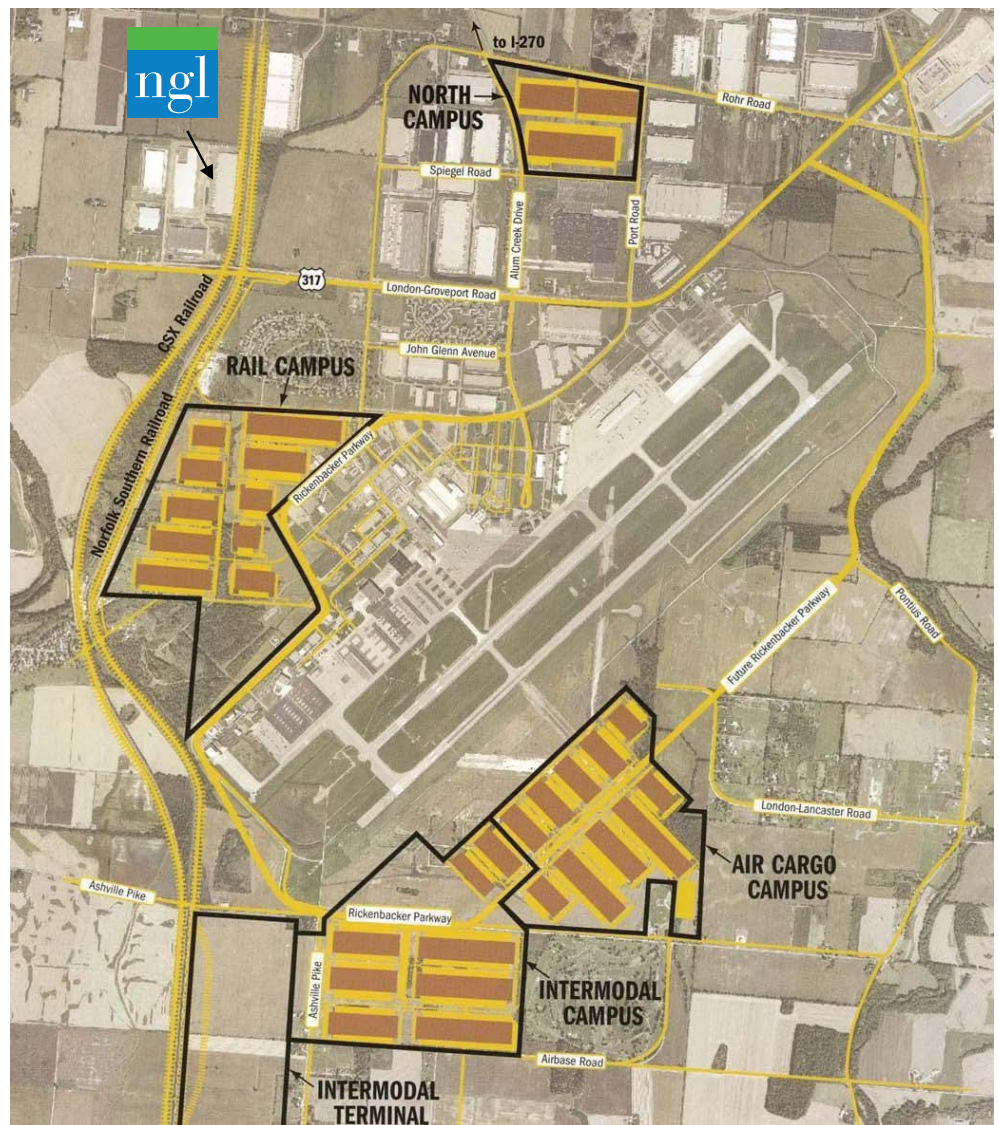




right part. right place. right time.

network global logistics

master site plan



NGL Logistics and Supply Chain Services:

- Contract Logistics
- Multi-Tenant Warehousing
- Service Parts Logistics
- E-Commerce Fulfillment
- Distribution
- Manufacturing Support Services

NGL Transportation Services:

- Sameday Air
- Sameday Ground
- International NFO
- Priority Airfreight
- International Airfreight
- Trade Compliance and Customs
- Ocean Shipping
- Freight Brokerage
- Parts Swap Out
- AOG
- Charter
- Reverse Logistics
- Time Critical Transportation

For additional information call 310-410-7777 or visit www.nglog.com

Corporate Headquarters
 320 Interlocken Parkway, Suite 100
 Broomfield, CO 80021
Phone: 800.938.1809
www.nglog.com

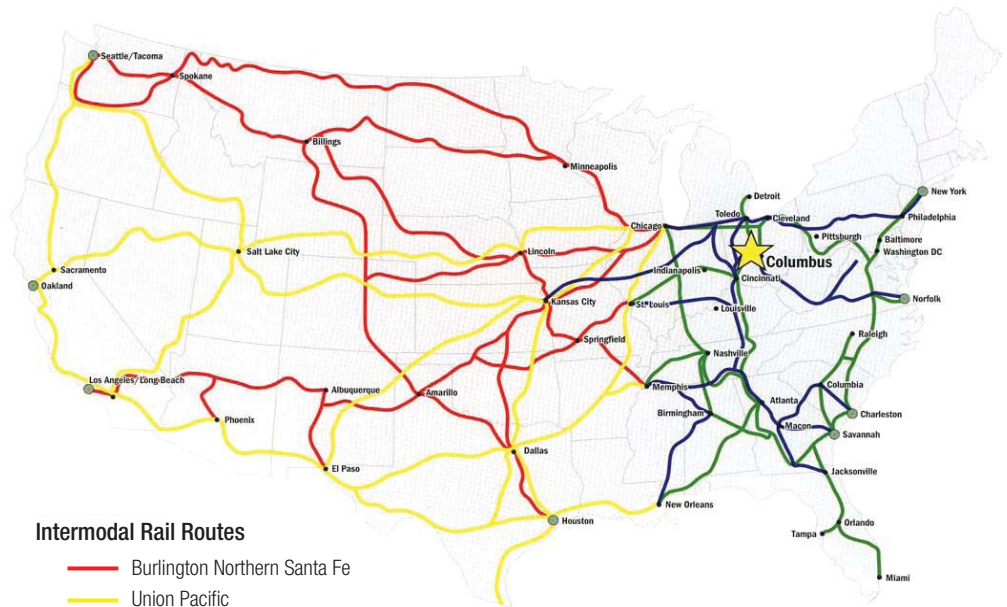




right part. right place. right time.

network global logistics

container ports & intermodal rail routes



NGL Logistics and Supply Chain Services:

- Contract Logistics
- Multi-Tenant Warehousing
- Service Parts Logistics
- E-Commerce Fulfillment
- Distribution
- Manufacturing Support Services

NGL Transportation Services:

- Sameday Air
- Sameday Ground
- International NFO
- Priority Airfreight
- International Airfreight
- Trade Compliance and Customs
- Ocean Shipping
- Freight Brokerage
- Parts Swap Out
- AOG
- Charter
- Reverse Logistics
- Time Critical Transportation

- Rickenbacker, located in Columbus, Ohio, is centrally positioned to the entire eastern half of the U.S., enabling same-day or next-day truck delivery to all population centers in the Northeast, Mid-Atlantic, Southwest and Midwest
- Rickenbacker is accessible by rail, air and truck from all major U.S. container ports and airports worldwide, affording global shippers maximum flexibility in mode, port and trade lane choice
- Rickenbacker will have the premier intermodal rail connection to the container terminals at Hampton Roads/Norfolk, Virginia via Norfolk Southern Railroad's Heartland Corridor. These facilities include the new Maersk Line terminal soon to be completed and the Virginia Port Authority's modern container terminals

For additional information call 310-410-7777 or visit www.nglog.com

Corporate Headquarters
 320 Interlocken Parkway, Suite 100
 Broomfield, CO 80021
Phone: 800.938.1809
www.nglog.com

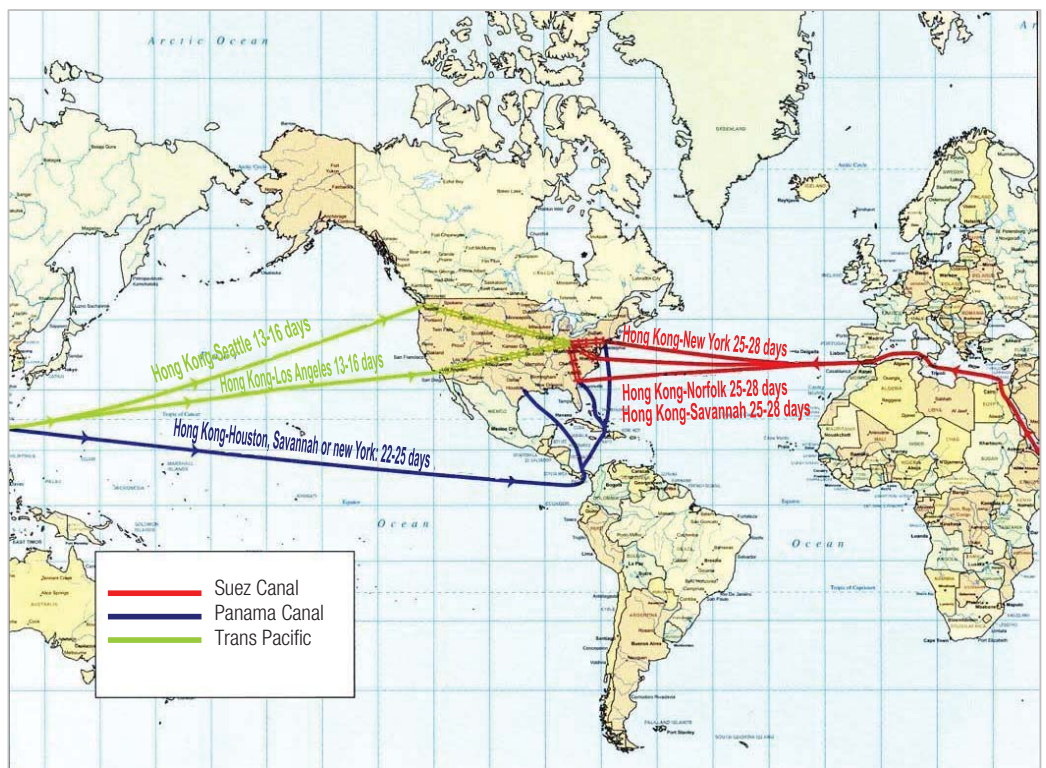




right part. right place. right time.

network global logistics

international world map



Typical Intermodal Transit Times*:

Seattle – Columbus	4.5 days
Los Angeles – Columbus	4.5 days
New York – Columbus	2 days
Savannah – Columbus	2 days
Norfolk – Columbus	1.5 days

*Ocean and intermodal transit times are indicative of average service levels offered by ocean and rail carriers.

For additional information call 310-410-7777 or visit www.nglog.com

NGL Logistics and Supply Chain Services:

- Contract Logistics
- Multi-Tenant Warehousing
- Service Parts Logistics
- E-Commerce Fulfillment
- Distribution
- Manufacturing Support Services

NGL Transportation Services:

- Sameday Air
- Sameday Ground
- International NFO
- Priority Airfreight
- International Airfreight
- Trade Compliance and Customs
- Ocean Shipping
- Freight Brokerage
- Parts Swap Out
- AOG
- Charter
- Reverse Logistics
- Time Critical Transportation

Corporate Headquarters
 320 Interlocken Parkway, Suite 100
 Broomfield, CO 80021
Phone: 800.938.1809
www.nglog.com



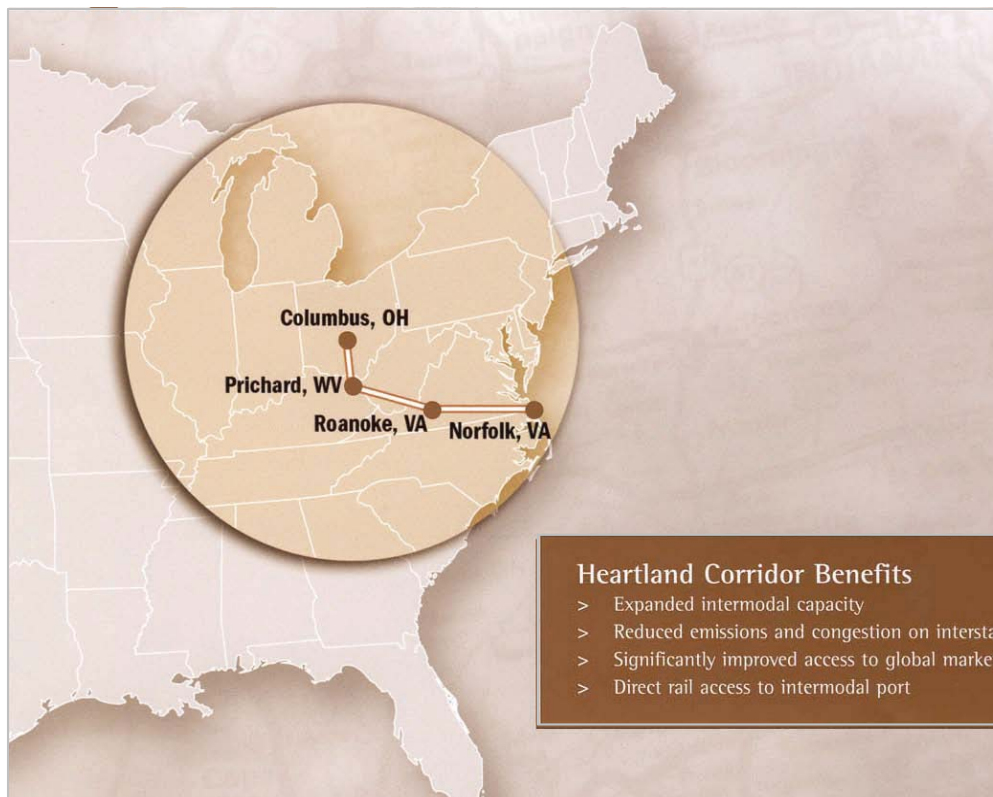
right part. right place. right time.

network global logistics

the heartland corridor

Improving Connections

A collection of intermodal projects has been designed to dramatically improve the worldwide flow of goods and increase the overall freight capacity in the region. Known as the Heartland Corridor, the projects will significantly expand capacity for efficient, low cost intermodal transportation by increasing tunnel clearance to allow for double-stack rail cars directly from the Port of Norfolk, Virginia. The Rickenbacker Intermodal Terminal is a prominent component of the Heartland Corridor and will solidify Rickenbacker's status as the premier distribution hub of the Midwest.



Heartland Corridor Benefits

- > Expanded intermodal capacity
- > Reduced emissions and congestion on interstates
- > Significantly improved access to global markets
- > Direct rail access to intermodal port

NGL Logistics and Supply Chain Services:

- Contract Logistics
- Multi-Tenant Warehousing
- Service Parts Logistics
- E-Commerce Fulfillment
- Distribution
- Manufacturing Support Services

NGL Transportation Services:

- Sameday Air
- Sameday Ground
- International NFO
- Priority Airfreight
- International Airfreight
- Trade Compliance and Customs
- Ocean Shipping
- Freight Brokerage
- Parts Swap Out
- AOG
- Charter
- Reverse Logistics
- Time Critical Transportation

For additional information call 310-410-7777 or visit www.nglog.com

Corporate Headquarters
320 Interlocken Parkway, Suite 100
Broomfield, CO 80021
Phone: 800.938.1809
www.nglog.com



right part. right place. right time.

network global logistics

rickenbacker fast facts

General Information

- Encompasses 1,300 acres surrounding the Rickenbacker International Airport and adjacent to the new Norfolk Southern intermodal terminal
- Capable of handling approximately 20 million square feet of development
- Located within a pro-business environment, which offers incentives aimed at reducing overall costs of doing business

Location

- Within a one-day truck drive to more than 50% of the U.S. and Canadian populations
- 20 miles southeast of downtown Columbus
- Easily accessible from I-270, I-71, I-70, Highway 23 and Highway 33

Rickenbacker International Airport

- Two parallel, 12,000-foot runways capable of handling any aircraft in the world
- Open 24/7/365
- Category I and II Landing System for all-weather landing capabilities
Among the largest ports of entry in the United States for textiles

Rickenbacker Intermodal Terminal

- Will provide direct access to and from industrial parks to multiple transportation options, reducing overall transportation costs for domestic and international shippers
- Expected to handle in excess of 300,000 container transfers a year
- Will provide many advantages to the region, including benefits in shipper costs, environmental emissions, safety, and regional competitiveness
- Combined with the Heartland Corridor Project, will provide direct double-stack rail service to and from the port of Norfolk, Virginia

Rickenbacker Foreign Trade Zone

- Includes the General Purpose Zone at Rickenbacker International Airport in Franklin and Pickaway counties
- Provides many benefits to companies engaged in international sourcing and distribution through potential deferral, reduction and elimination of customs duties
- More than 70 companies are located in the FTZ at Rickenbacker, including many Fortune 500 organizations

For additional information call 310-410-7777 or visit www.nglog.com

Corporate Headquarters
320 Interlocken Parkway, Suite 100
Broomfield, CO 80021
Phone: 800.938.1809
www.nglog.com



NGL Logistics and Supply Chain Services:

- Contract Logistics
- Multi-Tenant Warehousing
- Service Parts Logistics
- E-Commerce Fulfillment
- Distribution
- Manufacturing Support Services

NGL Transportation Services:

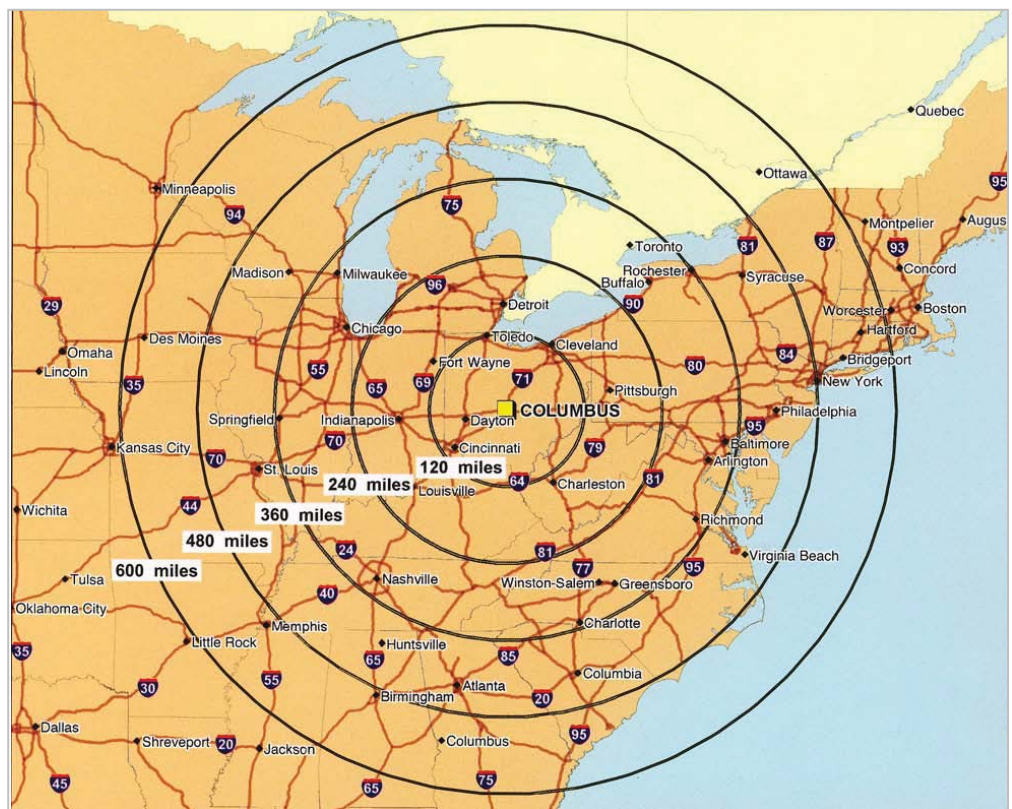
- Sameday Air
- Sameday Ground
- International NFO
- Priority Airfreight
- International Airfreight
- Trade Compliance and Customs
- Ocean Shipping
- Freight Brokerage
- Parts Swap Out
- AOG
- Charter
- Reverse Logistics
- Time Critical Transportation



right part. right place. right time.

network global logistics

national overview map



NGL Logistics and Supply Chain Services:

- Contract Logistics
- Multi-Tenant Warehousing
- Service Parts Logistics
- E-Commerce Fulfillment
- Distribution
- Manufacturing Support Services

NGL Transportation Services:

- Sameday Air
- Sameday Ground
- International NFO
- Priority Airfreight
- International Airfreight
- Trade Compliance and Customs
- Ocean Shipping
- Freight Brokerage
- Parts Swap Out
- AOG
- Charter
- Reverse Logistics
- Time Critical Transportation

Demographics

Ring	Population	Percent of US Population
120 Miles	10,167,666	3.43%
240 Miles	33,313,607	11.24%
360 Miles	75,693,062	25.54%
480 Miles	121,449,949	40.97%
600 Miles	151,215,890	51.01%
Entire US	296,460,069	

For additional information call 310-410-7777 or visit www.nglog.com

Corporate Headquarters
 320 Interlocken Parkway, Suite 100
 Broomfield, CO 80021
Phone: 800.938.1809
www.nglog.com



right part. right place. right time.

network global logistics

columbus area map



For additional information call 310-410-7777 or visit www.nglog.com

NGL Logistics and Supply Chain Services:

- Contract Logistics
- Multi-Tenant Warehousing
- Service Parts Logistics
- E-Commerce Fulfillment
- Distribution
- Manufacturing Support Services

NGL Transportation Services:

- Sameday Air
- Sameday Ground
- International NFO
- Priority Airfreight
- International Airfreight
- Trade Compliance and Customs
- Ocean Shipping
- Freight Brokerage
- Parts Swap Out
- AOG
- Charter
- Reverse Logistics
- Time Critical Transportation

Corporate Headquarters
320 Interlocken Parkway, Suite 100
Broomfield, CO 80021
Phone: 800.938.1809
www.nglog.com

