

right part. right place. right time.

service overview

e-commerce & fulfillment

No matter what your order fulfillment needs – whether B2B, B2C, each-pick, case-pick, or pallet shipment, standard order fulfillment or e-commerce fulfillment – NGL has the expertise to handle your distribution needs efficiently and cost effectively.

Our process-oriented, flexible order fulfillment services offer a wide range of specialized services – kitting, packaging, point-of-purchase display building, and labeling, to name a few – to accommodate your special shipping requirements.

As an experienced provider of order fulfillment services, we have a successful history of processing accurate, on-time, 100% retail-compliant shipments for some of the world's largest retailers. Our high-volume distribution and order fulfillment centers are conveniently located throughout North America.

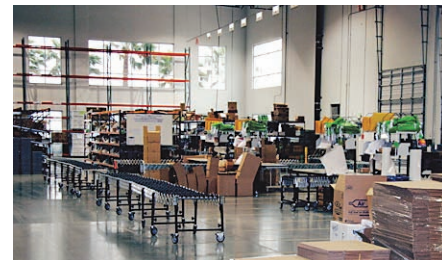
We can receive your orders in any manner you wish. This includes email, EDI, or XML. Our delivery methods are just as flexible.

Whether you want your products shipped full truckload, LTL, or small parcel, your products will be where they need to be, when they need to be, packed and shipped according to your unique specifications.

The entire order fulfillment and distribution process is supported by our advanced technology WMS and inventory control system. Our WMS is web-enabled offering you end-to-end, real-time supply chain visibility, 24 hours a day, seven days a week.

Benefits of Working with NGL.

- Streamline key supply chain functions from shipping raw materials to full e-commerce fulfillment.
- Rely on the legendary service that distinguishes our team — 'Global reach with a local touch.'
- Stay on top of all critical data throughout the supply chain.
- Gain a competitive advantage with NGL's express transportation services.
- Optimize your customer relationships with integrated logistics, warehousing and transportation services.



NGL Logistics and Supply Chain Services:

- Contract Logistics
- Multi-Tenant Warehousing
- Service Parts Logistics
- E-Commerce Fulfillment
- Distribution
- Manufacturing Support Services

NGL Transportation Services:

- Sameday Air
- Sameday Ground
- International NFO
- Priority Airfreight
- International Airfreight
- Trade Compliance and Customs
- Ocean Shipping
- Freight Brokerage
- Parts Swap Out
- AOG
- Charter
- Reverse Logistics
- Time Critical Transportation

Corporate Headquarters
320 Interlocken Parkway, Suite 100
Broomfield, CO 80021
Phone: 888.285.7447
www.nglog.com

