

right part. right place. right time.

facility overview

fontana distribution center



NGL Logistics and Supply Chain Services:

- Contract Logistics
- Multi-Tenant Warehousing
- Service Parts Logistics
- E-Commerce Fulfillment
- Distribution
- Manufacturing Support Services

NGL Transportation Services:

- Sameday Air
- Sameday Ground
- International NFO
- Priority Airfreight
- International Airfreight
- Trade Compliance and Customs
- Ocean Shipping
- Freight Brokerage
- Parts Swap Out
- AOG
- Charter
- Reverse Logistics
- Time Critical Transportation

Facility Facts

- 600,010 square feet
- 32 foot clearance
- 123 truck dock doors
- 228 trailer parking spaces
- 500 feet of motorized conveyor
- 8,100 fixed rack locations

Value-added Services

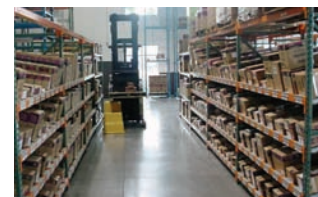
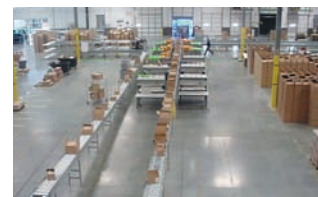
- Contract logistics facility
- Customer Service Staff
- Warehouse management system (RF)
- Supply chain visibility
- Vendor compliance
- EDI Services
- Inventory Management
- Container drayage available
- Retail distribution
- Direct to Consumer Distribution
- Barcode processing
- Case and Order Labeling
- Quality inspection (In and Outbound)
- Lot and serial control
- Pick and pack
- Order fulfillment
- Consolidation
- Bundling, strapping and wrapping
- Kitting
- Shrink wrap
- Repacking/custom packing
- Returns management
- Reverse logistics

Security

- ADT security system
- 24/7 security guard
- ESFR sprinkler system

Address of Facility

Network Global Logistics
13479 Valley Boulevard, Fontana, CA 92335
Phone: 909-356-9143 ■ Fax: 909-356-9152 or 909-356-9153
www.nglog.com



Corporate Headquarters
320 Interlocken Parkway, Suite 100
Broomfield, CO 80021
Phone: 888.285.7447
www.nglog.com

